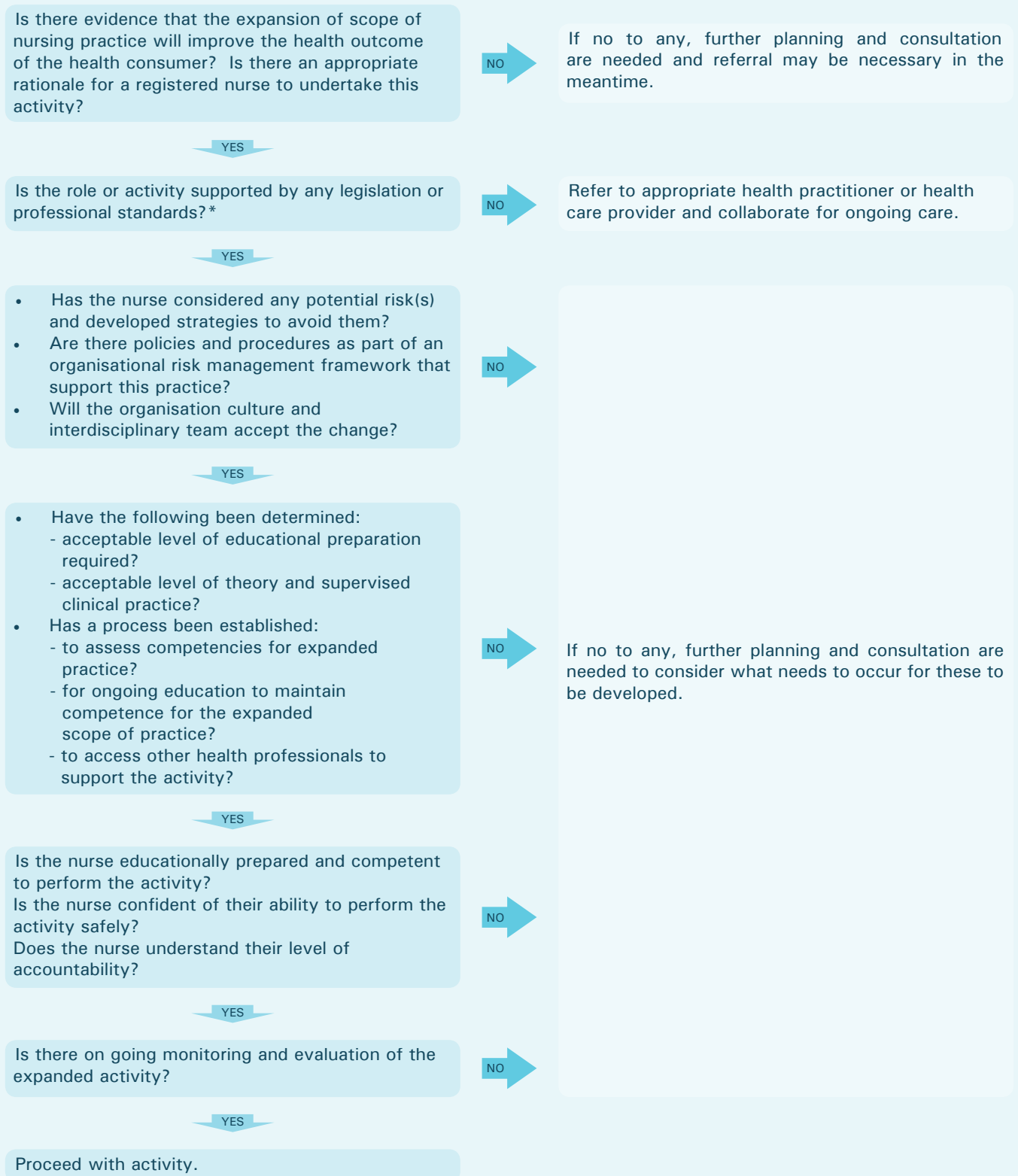


Decision-making process for expanding scope of registered nursing practice

Before considering an expansion of practice the following issues and questions should be considered in a collaborative manner by both the nurse and the employer:



(Adapted from Nurses Board of Victoria, 2008)

If 'Yes' to all, then it is appropriate to proceed with the expansion to practice but if the context changes the issues and questions must be reapplied.

If 'No' to any, the situation requires review, further planning and consultation. Referral may be necessary in the meantime.

* Standards may be developed by national professional associations or by an expert group convened by national groups.

Legislation can be a barrier to nurses performing some roles, e.g. signing death certificates.